

FOR LEASE > OFFICE & INDUSTRIAL

INDUSTRIAL FLEX SPACE

3780 EAST MORGAN ROAD | YPSILANTI, MICHIGAN



LIGHT INDUSTRIAL FLEX COMPLEX WITH OFFICE SPACES

> PROPERTY HIGHLIGHTS

- 10,312 SF Industrial / Flex Space, I-2 zoning, + 3 Acres for Parking, Storage
- Convenient Semi-truck Ingress, Egress, Loading, etc.
- Nicely Maintained Offices with Reception, Bathroom, Kitchen, Mud Room
- Access to Large (~4,282 SF) 3-Bay Garage with Storage
- Billboard signage on US-23

COLLIERS INTERNATIONAL

1955 Pauline Blvd | Suite 400

Ann Arbor, Michigan 48103

PHONE 734 994 3100

For More Information:

PAUL GODEK

paul.godek@colliers.com

734 769 5009



JIM CHACONAS

jim.chaconas@colliers.com

734 769 5005



ColliersAnnArbor.com



FOR LEASE > OFFICE & INDUSTRIAL

INDUSTRIAL FLEX SPACE

3780 EAST MORGAN ROAD | YPSILANTI, MICHIGAN



> EXTERIOR PROPERTY PHOTOS



- Long Driveway for Extra Parking
- Convenient Semi-truck Ingress, Egress, Loading, etc.
- Over 3 Acres Provides Both Inside, Covered, and Outdoor Storage for Inventory, Vehicles, Machinery, etc.

PAUL GODEK

PHONE 734 769 5009

EMAIL paul.godek@colliers.com



JIM CHACONAS

PHONE 734 769 5005

EMAIL jim.chaconas@colliers.com

FOR LEASE > OFFICE & INDUSTRIAL

INDUSTRIAL FLEX SPACE

3780 EAST MORGAN ROAD | YPSILANTI, MICHIGAN



> EXTERIOR PROPERTY PHOTOS



Access to Large (~4,282 SF) 2-bay Garage with Storage

Additional storage includes:

- Pole Barn ~3,652 SF
- Wooden Building ~1,174 SF.
- Covered Garage ~1,573 SF

PAUL GODEK

PHONE 734 769 5009

EMAIL paul.godek@colliers.com



JIM CHACONAS

PHONE 734 769 5005

EMAIL jim.chaconas@colliers.com

FOR LEASE > OFFICE & INDUSTRIAL

INDUSTRIAL FLEX SPACE

3780 EAST MORGAN ROAD | YPSILANTI, MICHIGAN



> INTERIOR / OFFICE PHOTOS



Nicely Maintained Office Building Includes:

- Reception Space
- Private Offices
- Bathroom
- Kitchen
- Mudroom

PAUL GODEK

PHONE 734 769 5009

EMAIL paul.godek@colliers.com



JIM CHACONAS

PHONE 734 769 5005

EMAIL jim.chaconas@colliers.com

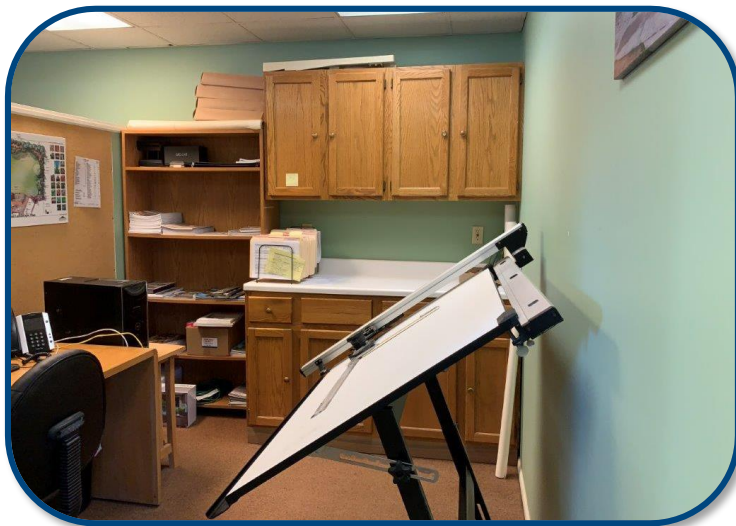
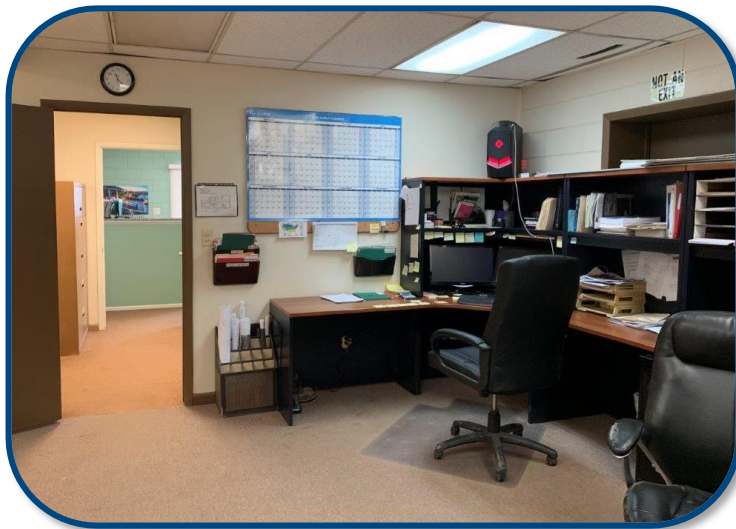
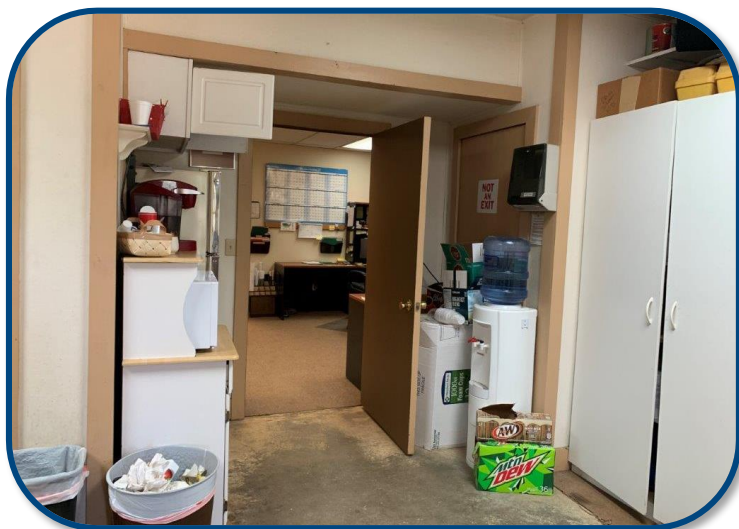
FOR LEASE > OFFICE & INDUSTRIAL

INDUSTRIAL FLEX SPACE

3780 EAST MORGAN ROAD | YPSILANTI, MICHIGAN



> INTERIOR / OFFICE PHOTOS



PAUL GODEK

PHONE 734 769 5009

EMAIL paul.godek@colliers.com



JIM CHACONAS

PHONE 734 769 5005

EMAIL jim.chaconas@colliers.com

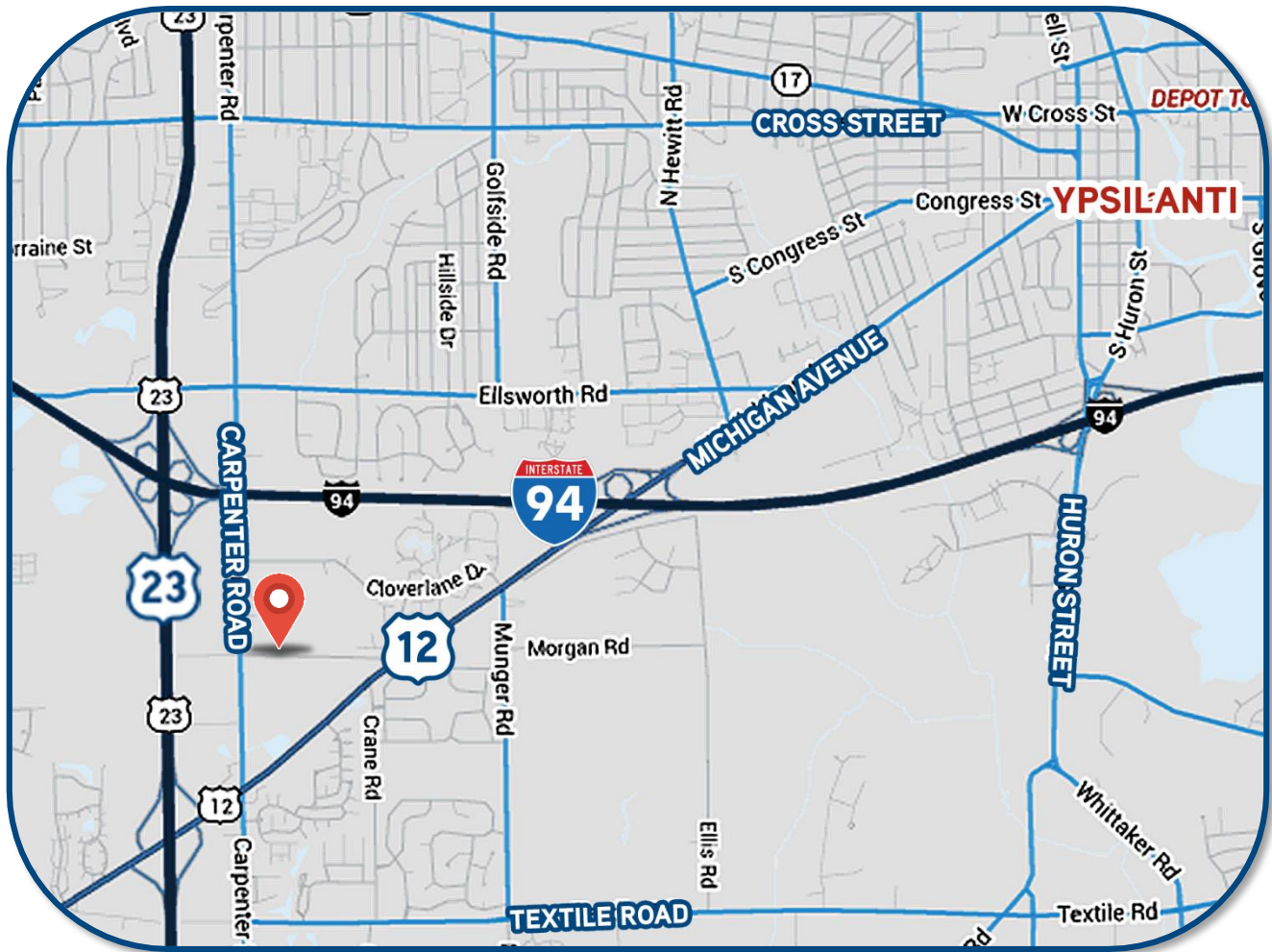
FOR LEASE > OFFICE & INDUSTRIAL

INDUSTRIAL FLEX SPACE

3780 EAST MORGAN ROAD | YPSILANTI, MICHIGAN



> LOCATION MAP



PAUL GODEK

PHONE 734 769 5009

EMAIL paul.godek@colliers.com



JIM CHACONAS

PHONE 734 769 5005

EMAIL jim.chaconas@colliers.com

FOR LEASE > OFFICE & INDUSTRIAL

INDUSTRIAL FLEX SPACE

3780 EAST MORGAN ROAD | YPSILANTI, MICHIGAN



> AERIAL MAP



PAUL GODEK

PHONE 734 769 5009

EMAIL paul.godek@colliers.com



JIM CHACONAS

PHONE 734 769 5005

EMAIL jim.chaconas@colliers.com